







MAKES ENERGY SAVING EASIER



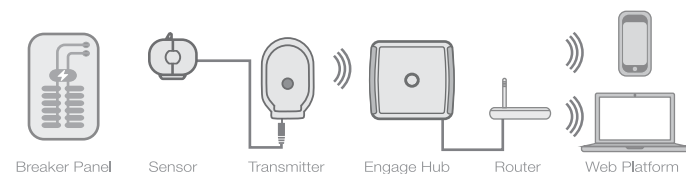
MONITOR REDUCE SAVE

-  Instantly see the cost of using energy in your home
-  View energy use on our web portal or smartphone app
-  Download your daily, weekly, monthly or average data
-  Discover and reduce your carbon footprint
-  Learn about energy with your family
-  Use the engage hub to reduce your home energy use



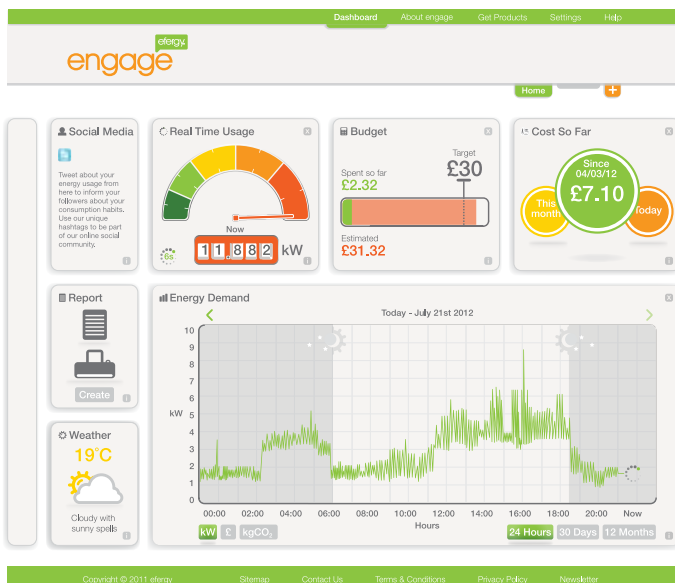
ENGAGE HUBS - HOW THEY WORK

Our **engage hubs** are simple to install and use. A mini CT sensor is clipped onto the live feed cable of your breaker panel. A lead from the sensor is connected to the efergy transmitter, which then wirelessly sends real time data to the **hub**. The **engage hub** is connected to your internet router via USB cable. The web platform or app will then show you how much energy you are using in the same units that are on your bill. You can also see how much energy you are saving compared to other web platform users, compare energy saving tips, and set energy consumption targets.



INSTANT ACCESSIBILITY

The **engage hub** updates every minute, providing real time, up to date energy information. **engage hub** enables you to see exactly how much electricity is being used in your home, online through our web portal **engage** or on a downloadable app for your smartphone. This allows you to access your energy data remotely, and at any time. View your energy data in graph, gauge, or numerical form.



EASY TO INSTALL

- Clip the mini CT sensor around the cable of your breaker panel
- Connect the sensor to the transmitter
- Plug the **engage hub** into your router
- Open the web platform on your PC / Mac
- Follow the online instructions to connect to your **engage hub**
- Use the **engage hub** & web platform to review your energy usage

TECHNICAL INFORMATION

Model Name	efergy engage hub 1.0
Model Number	HH-1.0-UK
Frequency	433MHz
Transmission Time	60 seconds
Transmission Range	40 - 70m
Sensor Voltage Range	90 - 600V
Measuring Current	50mA - 90A (max)

Testing Standards

CSA - UL - FCC



- 1 x engage hub
- 1 x Transmitter
- 1 x Mini CT Sensor
- 1 x ethernet cable

MONITOR REDUCE SAVE