

Yoswit Bluetooth Wall Switch User Manual

(Model Y0813 - Socket 118 Type, 1 Gang)



* Models with dimmer, more gangs and large current support are available at www.yoswit.com

Product Specifications

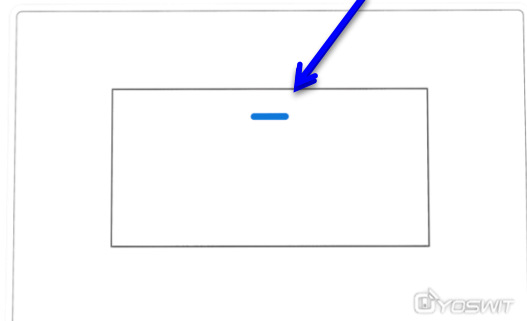
Switch Surface Material	Flame-resistant PC
Weight	112g
Input Voltage	AC100-250V~50/60Hz
Frequency	2.4GHz
Resistive Load Current	Max. 5A
Inductive Load Current	Max. 2.5A
Response Time	20ms
Standby Current	0.4uA

Certification



Bluetooth Chips Certification	BQB
Bluetooth Standard	Version 4.0
Bluetooth Range	>50m, open area
Operation System Support	IOS 7.0+, Android 4.3+
Devices Compatibility	Unlimited with app installed
Operating Environment	Indoors
Operating Temperature Range	32°F to 104°F (0°C to 40°C)
Operating Humidity Range	0-90% relative humidity, non-condensing
Storage Conditions	4°F to +158°F (-20°C to 70°C)

LED indicator



Package Specifications

Content	
Measurement	108 x 141 x 43 (mm)
Weight	187g

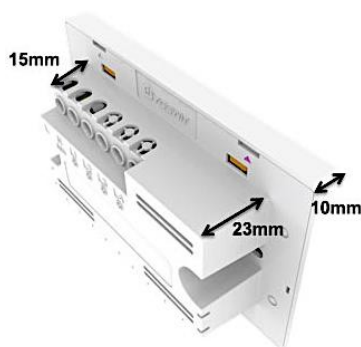
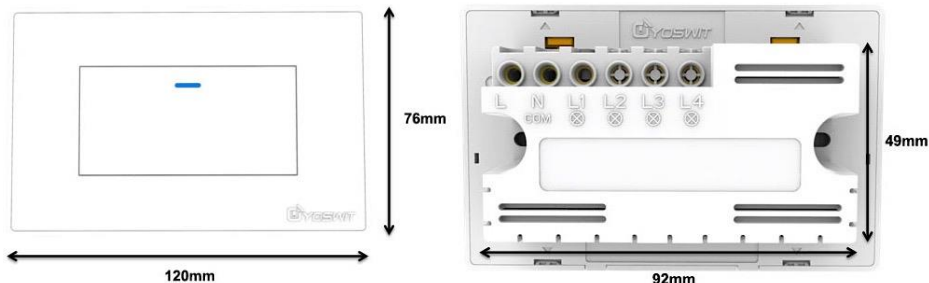


Outer Box Specifications

Measurement	6.46 x 8.46 x 2.58 (m)
Weight	7.85 Kg
Quantity Per Box	40 pack/box

About Yoswit's Bluetooth Wall Switch

Thank you for choosing Yoswit's Bluetooth Wall Switch (simply the product below)! We are specialized in Bluetooth (sometimes refer to Bluetooth low energy / BLE) switch manufacture. Our Bluetooth switch enables smart home appliances to be controlled wirelessly via your smartphones or tablets. The product is easy to install. You need not to do any pairing, setup or router configuration but only plug and play!



How It Works

The concept of our Bluetooth Wall Switch is simple but breakthrough. It is the combination of wall switch and Bluetooth 4.0. Every Bluetooth switch utilizes Bluetooth low energy technique as the wireless connection to the on board processor, real time clocks, memory and more making an integrated wireless network with interoperability from household appliances, environmental scene adjustment or security setting (and more you can imagine) has never been this easy!

Restart and Reset



► Restart Function

Handle Bluetooth connection loss, 1 click on "RESTART" (on top left corner) and release

► Password & Reset

Restrict switch control, set password via our app, reset it by pressing "RESET" (on top right corner) for 5sec

App Features



iOS 7.0+

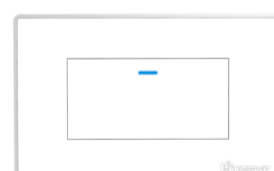
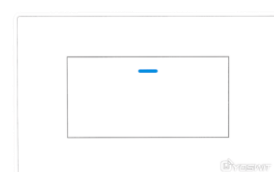
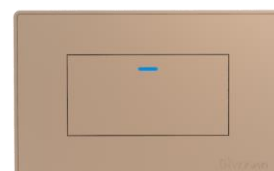
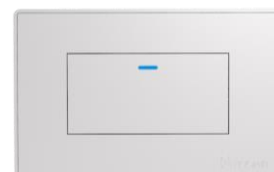
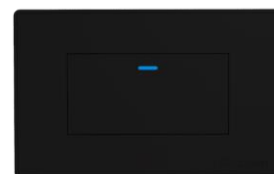


Android 4.3+

- **Room** - Manage different devices by rooms easily via our app
- **Timer** - Set timer on devices, the switch will auto-on-and-off
- **Away Detection** - Determine your range by Bluetooth, auto-turn on and off the switch
- **Smart Automation** - Detect by Bluetooth, once in range with your smart phone, light on when enter a room, light off while at sleep automatically
- **Status Tracking** - Track and reflect your device's status on your phone at real time
- **Remote Control** - prof.Share - our patent methodology applied on smart appliances that allows profile sharing between smart devices shortening the set-up files update process

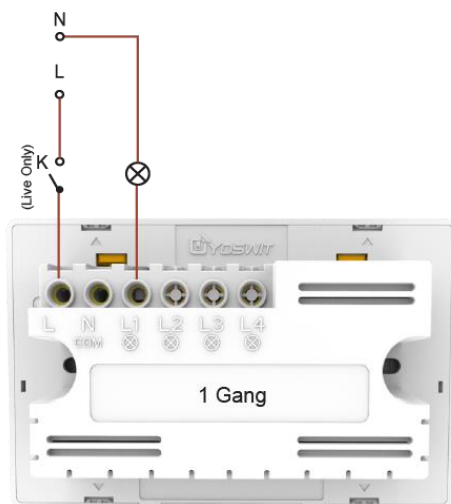
** The app will be updated when necessary. The latest app information can be found at <http://www.yoswit.com/app>.*

Color Options



Installation Steps

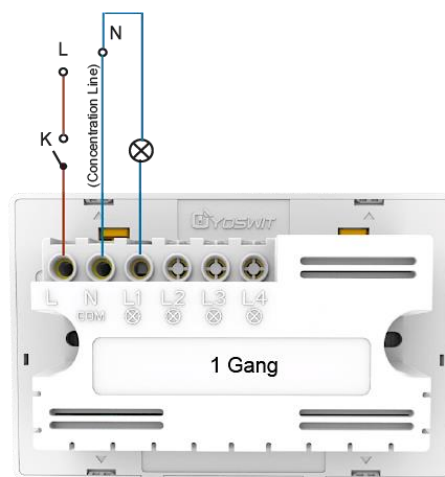
1. Remove plate from button box
 2. Follow wiring labels behind button box and insert wires to relative spots
- * The product support both Live Only and Live and Neutral wiring methods (below diagrams). Please check out the appropriate wiring method before installation. Contact an electrician if you are unable to do wiring.
3. Fasten button box on wall by placing two screws on both sides
 4. Cover plate on button box then connect to power
 5. Install Yoswit's app in any smart devices
 6. Open the app and enjoy the product



Live Only Wiring Diagram

Caution:

Live Only Wiring may cause low temperature while circuit operation. To solve conditions of circuit instability, lightings gleaming or no light, you may (i).adopt Live and Neutral Wiring method, or (ii).place a capacity at two ends of live and neutral wires.



Live & Neutral Wiring Diagram

Limited Warranty

The product is of standard 1-year warranty only without any congenital defects in materials and workmanship commencing from the date of purchase. This warranty is inapplicable to defects or errors caused by misuse or neglect.

If the product is found to be defective, or if the product does not perform as warranted above during warranty period, Yoswit will either repair or replace it upon the receipt of the product to our office (Unit 202B, 2/F, IC Development Centre, No. 6 Science Park West Avenue, Hong Kong Science Park, Shatin, N.T., HK) together with the completed warranty card (or through online warranty registration and an explanation of the defect or error.

□ **online warranty registration** <http://www.yoswit.com/warranty> □ **Go Green, You Can!**

Limitations

The above limited warranty is in lieu of all other warranties, whether oral or written, express or implied. Any implied warranty, including warranty of merchantability or fitness of the product for a particular purpose shall be limited to 1-year of the above written express warranty. In case of disputes, Yoswit reserves the right to make the final decision.

Home automation devices should be regarded as a convenience instead of the only method to control or adjust your home. Any home automation devices do have the chance of operation failure or electrical tampering, to optimize devices' use, please strictly follow the instruction before installation and verify devices' state manually whenever necessary.